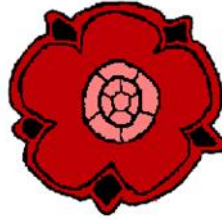


- Coffee with Claire—All School
- Annual consent forms—All School
- Data collection forms—YRD
- Parent's evening—All School



Orrell Holgate Primary School

The Newsletter is also available on the school website at www.holgate.wigan.sch.uk

Together Everyone Achieves More

Coffee with Claire

Hello, my name is Claire Parkin and I am the Parent Support Adviser for Orrell Holgate Primary School. My job is to offer advice and support to parents and carers.

I would like to invite you for tea and toast on:

Thursday 16th September 2010 from 9.15 to 10.30 a.m. in the Orrell Holgate Living & Learning Centre

For more information please ring Claire Parkin on 01942 776007 or 0782 5257 164

Coffee with Claire will take place on the following dates this term:

Thursday 16th September 9.15 – 10.30 a.m.

Thursday ^{???} October 9.15 – 10.30 a.m. (To be confirmed)

Thursday 18th November 9.15 – 10.30 a.m.

Thursday 16th December 9.15 – 10.30 a.m.

I look forward to meeting you

Blue is the colour – New bin trial ready for roll-out

Blue bins for the recycling of card, cardboard drink cartons, paper, envelopes, greetings cards, newspaper and magazines, catalogues and directories are coming to Wigan borough. This will enable residents to recycle more than they can in their white sacks and increase the borough's recycling rate.

Currently residents are recycling a third of their household waste, but the borough needs to up that figure to at least half. The blue bin trial for approximately 8000 homes will assess the viability of replacing the white sack with a blue bin to enable the wider range of materials to be recycled.

Areas have been chosen to be representative of the whole borough, so the impact of rolling out blue bins borough-wide can be assessed.

Maps of individual properties to be included can be viewed on Wigan Council's website.

Hard to access properties on the "rural" collection round, which have to be serviced by a smaller vehicle are also getting a new blue bin and a brown bin for glass, cans and plastics. Presently these properties have very limited recycling services.

Residents on the blue bin trial will receive a leaflet in September with details of the service and information on how they can request a smaller bin or stay with their white sack, if they wish.

Gail Robinson, Waste Disposal and Recycling Manager, urges residents on the pilot to try a new standard sized blue bin, "It's important to offer people a choice, but we think residents will be surprised how much extra recycling they can dispose of in a blue bin. For almost everyone, a standard sized bin, rather than a white sack will be the better option. This is because the pilot areas will have their paper collection every FOUR weeks not fortnightly, during the trial period."

The new blue bins will be delivered to residents in November, with first collections in December. The trial will run for six months and the results will be assessed before a decision is made whether to roll the service out across the borough.

The Frog Lane Household Waste Recycling Centre, which has been temporarily closed, **will not be re-opened.** The high cost of both carrying out essential maintenance work and bringing the site up to a standard that will ensure the safety of all users of the site is the reason for coming to this decision. The Household Waste Recycling Centre at Kirkless offers a superior recycling facility within reasonable proximity as an alternative.



Parents Staff and Friends Association 2009/10 - providing support

Suggestions

If you have any ideas for new events, please let a member of the PSFA know, or tell the office - any suggestions will be gladly considered. Alternatively, if you wish to be more involved, why not join us on the PSFA. Any help you could give would be greatly received.



BOOK BAGS / SWIM/PE BAGS

Book bags (£3.50) and swim bags (£3) are available from the school office.

Reversible School Coats

Order forms and samples are available from the School Office.

Reminder—AGM is on Wednesday 15th September at 8.00 p.m at the Delph Pub. If you are interested in joining the PSFA, please come along.

Remember to bring a plastic bottle of water to school each day!

Health and Safety

Could I please remind all parents and Carers that Wigan Council **does not allow dogs** onto school property, unless they are supporting someone with a disability.

Please do not bring dogs within the boundary fence of the school even if you carry them.



Thanks in anticipation of your co-operation

Girls Brigade at Billinge Family Church, Crank Road, Billinge, WN5 7DT

Come along and enjoy the fun at Girls Brigade
Learn new skills
Meet new friends

Age 4 –7, investigate with Explorers
Age 7-11, n-gage with Juniors

Every Wednesday 6.15 pm—7.30 pm Starting 18 September 2010

For more information contact Nanette on 01744 601827

Achievement & Celebration

Congratulations to this week's Award Winners

TEAM Award

Winners are:

YRD —

Y1W Sjoerd Jones

Y2S Tyler Hughes

Y3CH Joel Dealing

Y4D Tara Halliwell

Y5B Abigail Preece

Y6T Daniel White

Literacy Award

Winners are:

YRD —

Y1W Milly Smith

Y2S Anna Kendrick

Y3CH Abbie Jones

Y4D Ellie Heyes

Y5B Daniel Oakes

Y6T Lara Jennings

Numeracy Award

Winners are:

YRD —

Y1W Michael White

Y2S Matthew ennington

Y3CH Emma Griffiths

Y4D Sam Prescott

Y5B Jamie Arkwright

Y6T Ryan Durrans

Physical Education, Physical Activity & School Sport Awards

Y3CH Freddie Stephenson

Y3CH Charlie Hair

Y3CH Emily Cotton

Y3Ch Alex Hamer

Y4D Mitchel Ainscough

Y4D Sophie Punter

Other Curriculum Awards:

Y6T Lara Jennings

Y6T Ella Stephenson

Lunchtime Award

winners are:-

YRD —

Y1W Oliver Davies

Y2S Lizzie Hook

Y3CH Amber Downie

Y4D Mia Ashcroft

Y5B Lucy Punter

Y6T Taylor Charnock

Birthday News

Congratulations to the following children who celebrate their birthday next week.

Y1W Amelie Galbraith

Y3B Lewis Belshaw Y3B

The next
Celebration
Assembly is
Friday 17th
September at
3.00 p.m.
Phone the
school office
to book your
place!

Orrell Rugby Union Football Club

Wanted

Players aged 6 - 16

Now training every Sunday from 10.30 am at
St. John Rigby College.

Contact: Keith Roberts on 01744 892697 or
07732482834 or Dave Hewlett on 07764 576278

Why not come along and give it a try.

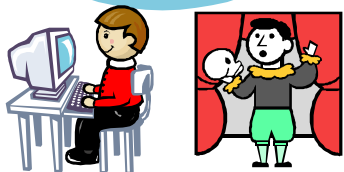
Can you help?

Mrs Dunn and the reception children need old birthday and greetings cards to use in the making area.



Moor Road
Orrell
Wigan

Phone:
01942-776670



Together Everyone Achieves More



Check here for important events

Thursday 16th September

**Parent's Consultation
meetings Y1, Y2, Y3, Y4,
Y5**

Thursday 23rd September

**Parent's consultation
meetings YRD, Y6**

HOLGATE ExTrA EXTENDED LEARNING

MONDAY 3.30-4.30 PM - KS1/KS2 Computer Club with Mrs Malinowski (£2.50 per week).

TUESDAY 8.00—8.45 A.M.—Y4, Y5, Y6 westling with Heartlift- FREE-Limited Numbers. See application form for details

TUESDAY 3.30-4.30 P.M. - KS1/KS2 Computer Club with Mrs Ward (£2.50 per week)

WEDNESDAY 3.30-4.30 P.M. Carolyn Leach Soccer Club for all children (£2.50 per week) See application form for details.

WEDNESDAY 3.30 to 4.30 PM. KS1/KS2 Computer Club with Mrs Chriscole / Mrs Breheny (£2.50 per week)

WEDNESDAY 3.30-5.30 PM. Angela Shadwick Gymnastics Club (Private Letting £4 per week)

Places available for YRD, Y1, Y2 (3.30 - 4.30)

THURSDAY 3.30-4.30 P.M. - Junior Netball Y6 with Annette Hamilton - **FREE** - See application form for details.

FRIDAY 3.30-4.30 P.M. - Hockey Club with James Y5/Y6 - **FREE** - See application form for details.

*****Hockey club cancelled Friday 17th September*****

Dates for your diary

Autumn Term 2010

Start: 2nd September

Half Term:

20th to 29th October

End: 22nd December

Spring Term 2011

Start: 6th January

Half Term:

21st to 25th February

End: 8th April

Summer Term 2011

Start: 27th April

Bank Hol: 2nd May

Half Term:

30th May to 3rd June

Ends: 20th July